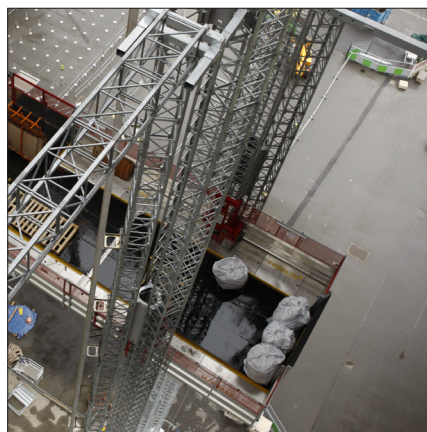
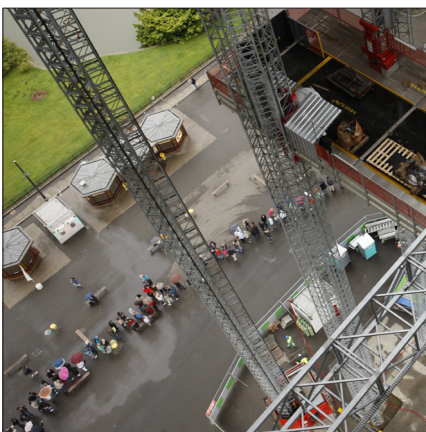
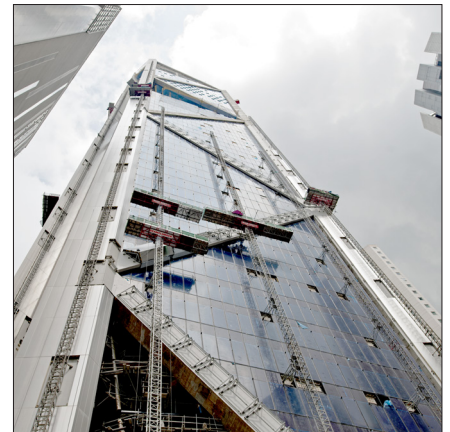
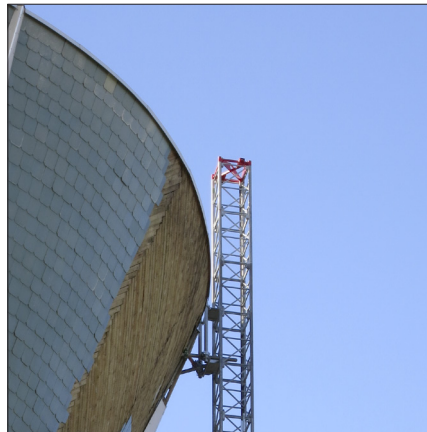




# Mast climbing work platforms **Product family**

Mast climbing work platforms (MCWPs) are increasingly being used as temporary work places, giving variable height access to specific areas above ground level. In many cases MCWPs are more convenient to use than other forms of access equipment such as ladders, fixed scaffolding, staging or swingstage.



# Mast climbing work platforms

## Properties

**MAST CLIMBERS ARE IDEAL** for façade work when lifting capacity, work ergonomics, and full surface accessibility are required on a new construction or renovation site. Scanclimber mast climbers offer lifting capacity from 1000 kg up to 10200 kg, ideal work ergonomics with full access to the surface with lifting speeds up to 12 meters per minute.

**RACK AND PINION DRIVEN** Scanclimber mast climbers are medium to heavy weight lifting machines and working platforms – all in one package. They can handle extreme heights, climbing fast and reliably up to 300 meters. They are well-suited for facade work that requires a capacity from 1 tonne to 10 tonnes, whether for new construction or restoration.

## Uses

**SCANCLIMBER MAST CLIMBERS** combine low ownership costs with versatility, reliability and safety. They are the ideal access solution for a wide variety of trades: glazing, EIFS, painting, roofing,

caulking, restoration, inspection, cleaning, maintenance, stucco and many others. Compact and highly adaptable Scanclimber mast climbers offer platform extensions to achieve a number of configurations that accommodate diverse facades.

## Single mast and twin mast versions

**MAST CLIMBERS ARE AVAILABLE** in two versions to meet your specific needs and your budget requirements.

**THE SINGLE MAST** versions support from 1 to 6 tonne payloads with platform lengths between 4.1 m and 20.1 meters.

**THE TWIN MAST** versions support payloads from 1 to 10.2 tonnes with platform lengths of up to 48.6 meters.

**IF NEEDED**, you can make the twin mast machine from two separate (similar) machines with minor add-ons. And naturally, a twin machine can always be separated as two single mast versions.

Technical Data	SC4000		SC5000	
	Single mast	Twin mast	Single mast	Twin mast
Maximum platform length / loading capacity	4.2 m / 2000 kg	11.9 m / 4200 kg	4.1 m / 2700 kg	12.6 m / 5000 kg
	7.4 m / 1700 kg	15.1 m / 3800 kg	7.3 m / 2300 kg	20.6 m / 4000 kg
	10.5 m / 1400 kg	19.9 m / 3250 kg	10.5 m / 1900 kg	28.6 m / 3000 kg
	12.5 m / 1200 kg	23.1 m / 2775 kg	13.7 m / 1500 kg	35.0 m / 2200 kg
		26.3 m / 2515 kg	16.9 m / 1000 kg	40.6 m / 1500 kg
		31.4 m / 2065 kg		
Maximum freestanding height				
• with extended outriggers on both sides	15 m	15 m	18–20 m	18–20 m
• with extended outriggers on one side	15 m	15 m	13–18 m	12.5–17.5 m
Maximum height with top anchor	25 m	25 m	25 m	25 m
Maximum height with mast anchored	100 m (higher mast by request)	100 m (higher mast by request)	100 m (higher mast by request)	100 m (higher mast by request)
Distance between anchors	18 m	18 m	18 m	18 m
Lifting speed	6 m / min	6 m / min	7 m / min	7 m / min
Mast section, hot-dip galvanised	1.25 m / 82 kg	1.25 m / 82 kg	1.25 m / 82 kg	1.25 m / 82 kg
Electric system	2x400 V/50 Hz/	4x400 V/50 Hz/	2x400 V/50 Hz/	4x400 V/50 Hz/
- lifting motors	2.2 kW, 3 phase/32 A	2.2 kW, 3 phase/32 A	3 kW, 3 phase/32 A	3 kW, 3 phase/32 A
Safety devices				
• overspeed safety brake	◆	◆	◆	◆
• emergency stop and limit switches	◆	◆	◆	◆
• electromagnetic brake	◆	◆	◆	◆
• phase sequency relay	◆	◆	◆	◆
• residual current device	◆	◆	◆	◆



## Work space and speed

**1.3–1.6 M WIDE PLATFORMS** provide enough space for workers to perform their job in comfort and still requiring a very small footprint (space) on site. The machine is operated with speeds ranging from 6–12 m/min.

## Fast to erect

**SCANCLIMBER MAST CLIMBERS** are faster to set up than most mast climbers. The reason is a very stable mast. It allows longer anchor/tie spacing – often almost double compared to respective rival products. All this contributes to greater labour efficiency and reduced set-up time, and of course to a safer work environment.

## Long Lifetime – More Profit

**SCANCLIMBER HAS BUILT IN LONG-LASTING QUALITY** to mast climbing work platforms. It is in the structure, raw materials, automated manufacturing processes and finishing. For example the masts sections are precision welded from high quality steel by robots and when ready, they are finished with hot-dip galvanisation.

## Interchangeable components

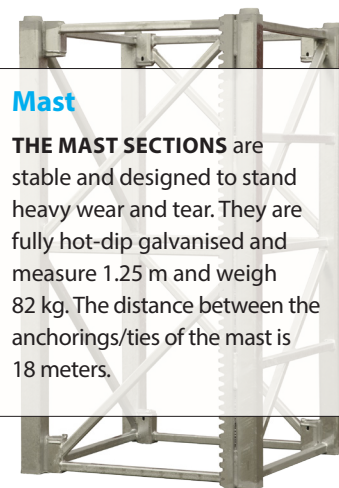
**THE MODULAR DESIGN OF SCANCLIMBER** mast climbing work platforms makes most of the components interchangeable between different Scanclimber models. The platform is easy and quick to erect and assemble manually and to transfer to a new location when necessary.




**ALL SCANCLIMBER** mast climbing work platforms are equipped with reliable safety systems:

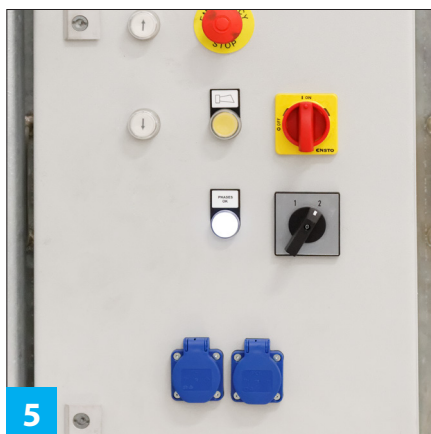
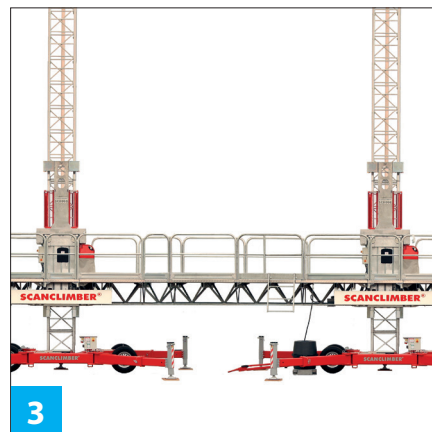
- Safety brake, to prevent platform from falling in all circumstances
- Emergency lowering system
- Automatic movement limit switch at top and bottom
- Automatic levelling system, twin mast versions.

### Mast

**THE MAST SECTIONS** are stable and designed to stand heavy wear and tear. They are fully hot-dip galvanised and measure 1.25 m and weigh 82 kg. The distance between the anchorings/ties of the mast is 18 meters.



SC6000		SC8000		SC10000	
					
Single mast	Twin mast	Single mast	Twin mast	Single mast	Twin mast
4.1 m / 3300 kg	13.4 m / 5600 kg	4.1 m / 4500 kg	14.2 m / 8000 kg	4.1 m / 6000 kg	15.8 m / 10200 kg
7.3 m / 2900 kg	23.8 m / 4600 kg	7.3 m / 4100 kg	23.8 m / 7500 kg	7.3 m / 5600 kg	19 m / 10400 kg
10.5 m / 2700 kg	27 m / 4100 kg	10.5 m / 3700 kg	27.0 m / 6500 kg	10.5 m / 5300 kg	24.6 m / 8800 kg
13.7 m / 2100 kg	36.6 m / 2200 kg	13.7 m / 3250 kg	36.6 m / 4100 kg	13.7 m / 4000 kg	30.2 m / 6600 kg
16.9 m / 1400 kg	44.6 m / 1200 kg	16.9 m / 2800 kg	46.2 m / 1000 kg	16.9 m / 3100 kg	35 m / 5600 kg
				20.1 m / 1800 kg	40.6 m / 4300 kg
					48.6 m / 1500 kg
12–19 m 9–15 m	12–18 m 9–15 m	9–19 m 9–15 m	9–18 m 9–15 m	9–19 m 9–15 m	9–18 m* 9–15 m*
25 m	25 m	25 m	25 m	25 m	25 m
100 m (higher mast by request)	100 m (higher mast by request)	150 m (higher mast by request)	150 m (higher mast by request)	150 m (higher mast by request)	150 m (higher mast by request)
18 m	18 m	18 m	18 m	18 m	18 m
11.3 m / min	11.3 m / min	7.2 m / min	7.2 m / min	8 m / min	8 / min
1.25 m / 82 kg	1.25 m / 82 kg	1.25 m / 82 kg	1.25 m / 82 kg	1.25 m / 82 kg	1.25 m / 82 kg
2x400 V/50 Hz/ 5.5 kW, 3 phase/32 A	4x400 V/50 Hz/ 5.5 kW, 3 phase/32 A	2x400 V/50 Hz/ 4 kW, 3 phase/32 A	4x400 V/50 Hz/ 4 kW, 3 phase/32 A	2x400 V / 50 Hz / 5.5 kW, 3 Phase/32 A	4x400 V / 50 Hz / 5.5 kW / 3 Phase/32 A
◆ ◆ ◆ ◆	◆ ◆ ◆ ◆	◆ ◆ ◆ ◆	◆ ◆ ◆ ◆	◆ ◆ ◆ ◆	◆ ◆ ◆ ◆



## Details, examples

### Wheel and minichassis

**1** **SCANCLIMBER PLATFORMS** are available with a wheel or mini chassis. A wheel chassis can be moved around a work site with its own electric motor, or it can also be towed using the tow bar. The wheel chassis has swivelling telescopic outriggers that can be adjusted in several positions to support the machine.

### Safety brake

**2** **A MECHANICAL**, centrifugal safety brake is a standard feature on all Scanclimber work platforms. It improves user safety.

### Automatic levelling system

**3** **A TWIN VERSION** of Scanclimber mast climbers comes with an automatic levelling system. This highly reliable system controls the platform drive precisely and ensures that the platform is always horizontally levelled.

### Emergency lowering system

**4** **ALL SCANCLIMBER PLATFORMS** can be manually lowered to the ground.

### Outlet for hand tools

**5** **HAND TOOLS** or other electrical devices can be plugged in the outlet sockets on the platform. It is a handy way to use electrical tools on the platform without impractical extension cables.

### Hot-dip galvanisation

**6** **ALL THE MAIN PARTS** of Scanclimber work platforms are hot-dip galvanised. So the surfaces are easy to keep clean while protected against demanding weather conditions and corrosion. Galvanisation ensures a long life-time for the machine in any weather conditions.

Scanclimber is the world's technology leader in mast climbing equipment for installations. The company has its corporate head office in Pirkkala, Finland, and manufacturing in Gniezno, Poland. The company employs more than 200 people worldwide. Scanclimber creates value for its customers with high quality, reliable and flexible vertical access solutions.

**SCANCLIMBER®**  
by Tractel®

Scanclimber Oy, Turkkirata 26, FI-33960 Pirkkala | [www.scanclimber.com](http://www.scanclimber.com)  
Tel. +358 10 680 7000, Fax +358 10 680 7033

Authorised partner