

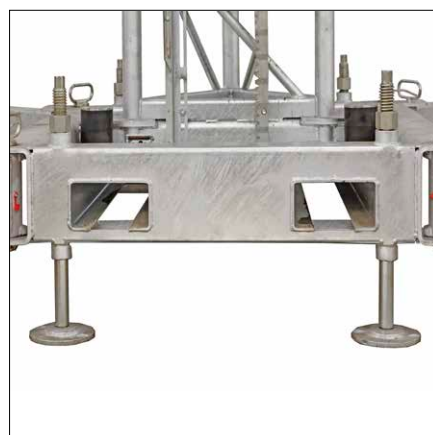
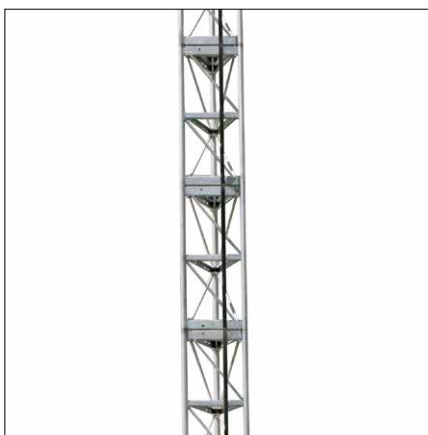
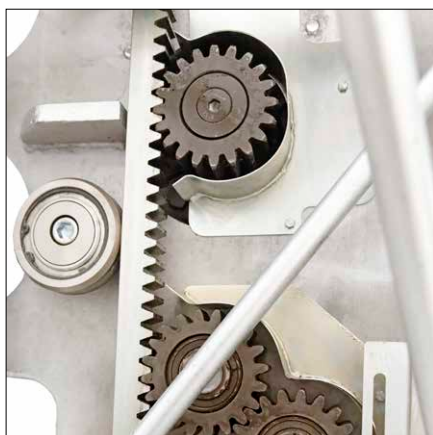


Mast climbing work platform

Luna SC3500L

Technical data

Luna SC3500L is a mid-weight mast climbing work platform for sites with limited space. With a load capacity of up to 4300 kg, and a climbing rate of 9.5 meters per minute, it is the perfect tool for any facade work that requires light to medium lifting capacity. The maximum platform length of a single mast unit is 12.4 m and 41.7 m as a twin mast.



SCANCLIMBER®

Luna SC3500L

Platform	Single mast	Twin mast
Length, min-max	4.4–12.4 m	5.7–41.7 m
Width	1.3 m	1.3 m
Payload / length	2200 kg / 4.4 m 1800 kg / 7.6 m 1650 kg / 9.2 m 1500 kg / 10.8 m 1200 kg / 12.4 m	4300 kg / 5.7 m 3600 kg / 14.5 m 2900 kg / 22.5 m 2400 kg / 28.9 m 900 kg / 41.7 m
Speed	9.5 m / min	9.5 m / min
Loading height	1.75 m	1.75 m
Lifting frame 4.4 m	1660 kg	1660 kg x 2
Platform section 1.6 m	110 kg	110 kg
Platform section 0.8 m	70 kg	70 kg



Work platform with railings



Chassis	Mini chassis	Mini chassis LD
Weight	324 kg	205 kg
Transport dimensions	1352 x 1396 mm	858 x 1394 mm
Chassis dimensions, outriggers in X position	2496 x 2612 mm	not available
Chassis dimensions, outriggers in K position	3082 x 1905 mm	3000 x 1436 mm



Mini chassis



Safety equipment



Safety brake

Mechanical safety brake
Emergency lowering system
Safety railings 1.1 m with kick boards
Top and bottom limit switches
Top and bottom safety limit switches
Spring-loaded disk brakes in lifting motors
Inductive mast detector
Residual current device



Emergency lowering system

Mast



Mast section

Height of the mast section	1.5 m
Length x width	600 x 520 mm
Weight	67 kg (1.5 m)
Material	Steel
Surface treatment	Hot-dip galvanising
Structure	Triangle mast
Maximum distance between anchors	9 m
Maximum freestanding height	6 m

Electric system



Control box

Lifting motors	2 x 2.5 kW
Supply voltage	400 V / 50 Hz
Power supply fuses	3 x 32 A
Power consumption	44 kVA
Maximum starting current	60 A
Control voltage	48 VAC
Socket for hand tools	2 x 230 V / 16 A






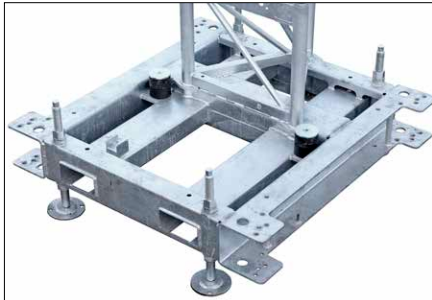
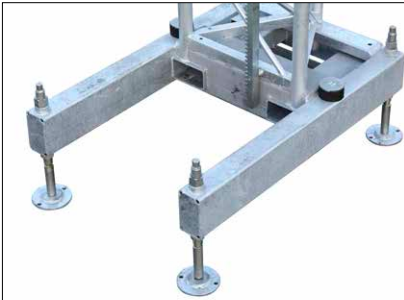
Remote control



Travel alarm switch



Twin motor drive

Optional equipment		Code	Product	Code	Product
 <i>Platform section 1.6 m</i>	PG161400	Mast section 1.5 m	PG166163	Weather cover 1.6 m	
	10005909	Mast bolt	PG153887	Anchor	
	PG163958	Platform section 1.6 m with railings	PG164231	Adjustable platform extension 1.4 m (w=1.6 m)	
 <i>Adjustable platform extension 1.4 m</i>	PG164089	Platform section 0.8 m with railings	PG164456	Jack extension for PG158126	
	PG163937	Mini chassis	PG120231	Railing 1.6 m	
	PG152974	Mini chassis with outriggers	PG126321	Railing 0.8 m	
 <i>Weather cover 1.6 m</i>	PG158126	Mini chassis, LD	PG164218	Twin mast synchro drive system	
	<div> <i>Mini chassis</i></div> <div> <i>Mini chassis, LD</i></div>				

Scandclimber is the world's technology leader in mast climbing equipment for both temporary and permanent installations. The company has its corporate head office in Pirkkala, Finland, and manufacturing in Gniezno, Poland.

The company employs more than 200 people in Europe and Asia. Scandclimber creates value for its customers with high quality, reliable and flexible vertical access solutions.

SCANCLIMBER®

Scanclimber Oy, Turkkirata 26, FI-33960 Pirkkala | www.scanclimber.com
Tel. +358 10 680 7000, Fax +358 10 680 7033

Authorized partner